

# UNIPRO

THE ORIGINAL LAPTIMER

## Included with UniGo 7006

WI-FI  
& BLUETOOTH



- WiFi, BT, BLE, NFC, USB, CAN
- Flexible inputs
- 100 Hz GPS
- Multiple temp. inputs
- IMU for 3D tracking
- Air pressure sensor
- Audio voice feedback
- Built-in acc/gyro
- Humidity from GPS module
- Expandable with UniBox

# Over 30 years

## SINCE THE FIRST UNIPRO LAPTIMER WAS MADE



### **30 years of experience**

makes this the ultimate Laptimer. We have included a bunch of new features, and improved several features from the previous UniGo series.

### **100Hz GPS and 3D tracking**

makes it possible for the first time to see how the go-kart actually moves in 3D, and the 100Hz update rate gives much more precise lap times. Mounted externally for precision and to avoid the antenna turning with the steering wheel.

### **Several communication channels**

enables you to talk to the Laptimer in many ways. WiFi and USB for computers and BLE and NFC for phones and tablets.

### **Sensors can be connected directly**

and now it is possible to connect for instance throttle and brake sensors directly thanks to the Flex input.

### **Accelerometer/gyroscope**

is added to give steering wheel position without any external sensor.

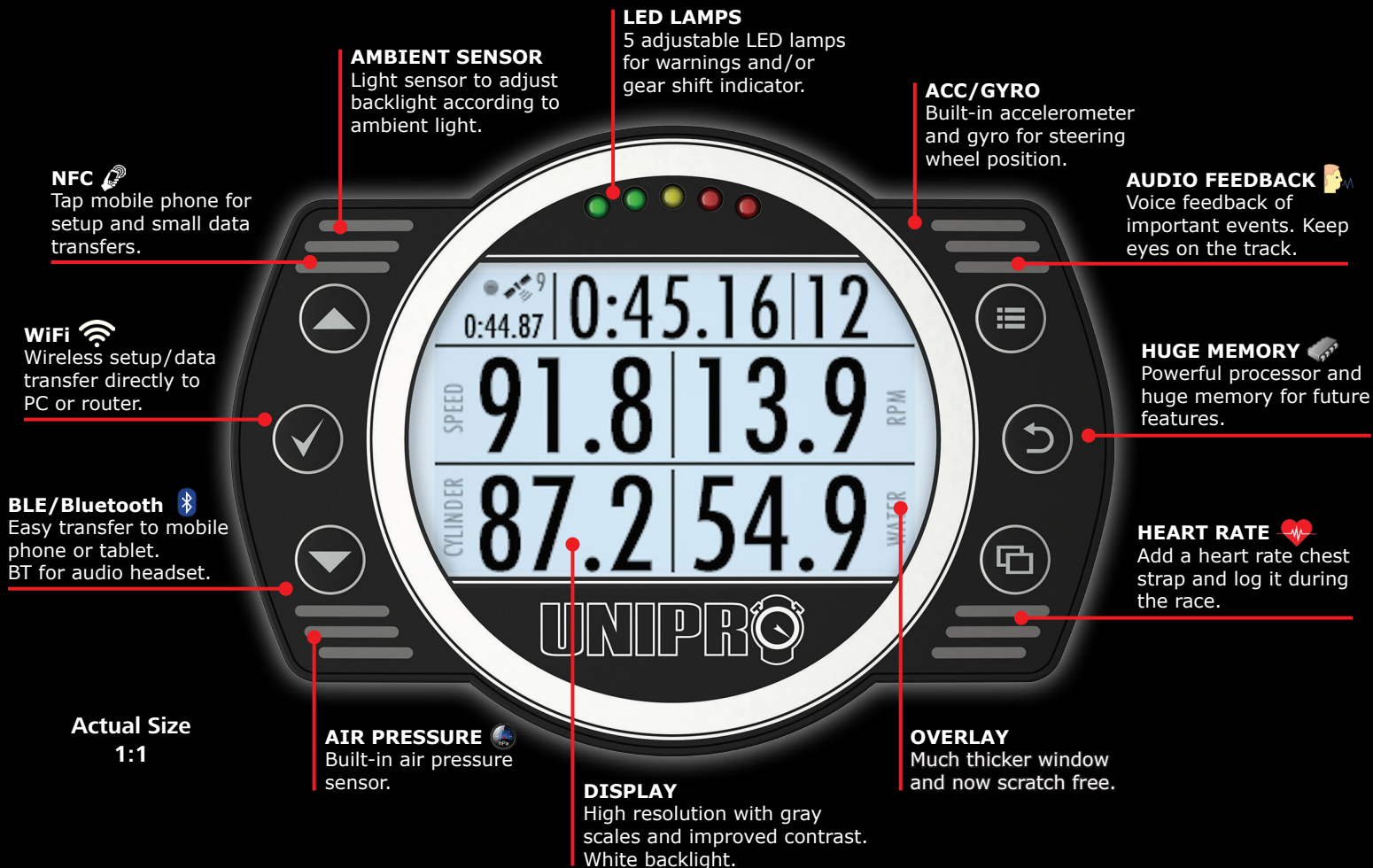
### **The included Off Camber Data software**

provides a complete overview which enables you to compare results between drivers, training sessions, and heats. It even syncs with video from your GoPro camera.


### **Ready to start**


with the included battery holder with 6 AA alkaline batteries, a RPM wire and a water temperature sensor (UniGo 7006) or a magnet receiver (UniGo 7006 Lite). All sensors from the previous UniGo series are compatible and can be bought as accessories later.

# UniGo 7006




**NFC**   
Tap mobile phone for setup and small data transfers.

**WiFi**   
Wireless setup/data transfer directly to PC or router.

**BLE/Bluetooth**   
Easy transfer to mobile phone or tablet. BT for audio headset.


**Actual Size**  
1:1


**AIR PRESSURE**   
Built-in air pressure sensor.


**DISPLAY**  
High resolution with gray scales and improved contrast. White backlight.

**LED LAMPS**  
5 adjustable LED lamps for warnings and/or gear shift indicator.

**ACC/GYRO**  
Built-in accelerometer and gyro for steering wheel position.

**AUDIO FEEDBACK**   
Voice feedback of important events. Keep eyes on the track.

**HUGE MEMORY**   
Powerful processor and huge memory for future features.

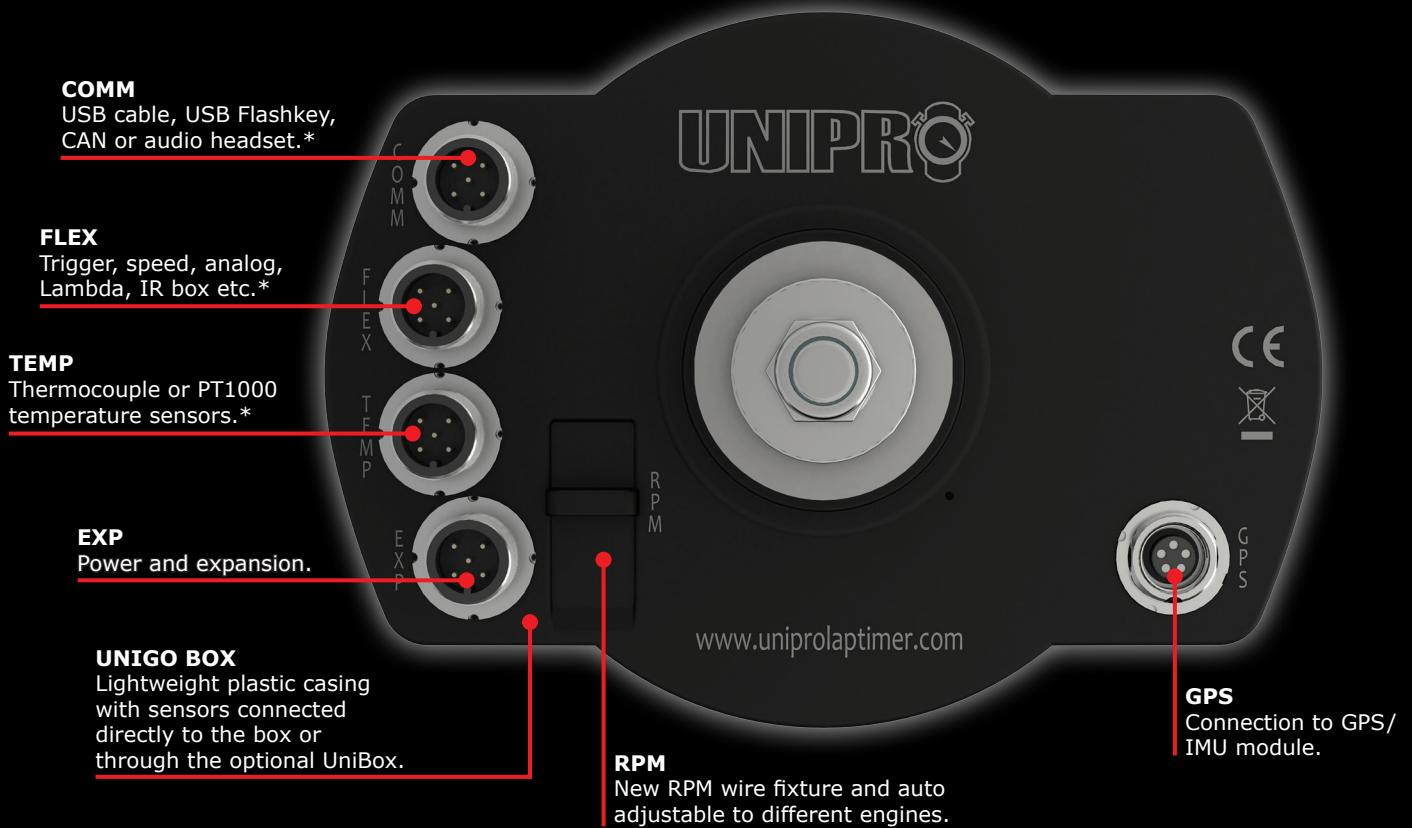
**HEART RATE**   
Add a heart rate chest strap and log it during the race.

**OVERLAY**  
Much thicker window and now scratch free.

## Features

<b>GPS Receiver</b>	Ground breaking GPS receiver gives 100Hz updates and add 3-axis of accelerometer, gyroscope and magnetometer. Enables 3D tracking of the go-kart!
<b>Communication Channels</b>	Communicate via WiFi, Bluetooth, BLE, CAN, NFC, USB cable or USB flash key. WiFi as client for teams, or access point for private drivers. Fast transfer speed.
<b>Connect Sensors Directly</b>	Flexible inputs let you connect two temperatures, RPM, trigger, analog, digital, speed, Lambda, IR Box, or BLE sensors like a heart rate chest strap.
<b>Built-in Sensors</b>	Several built-in sensors like air pressure, humidity, steering wheel position, battery voltage, light sensor, real-time clock and environment temperature.
<b>Huge Memory</b>	4GB for logging up to 60Hz. Possible to add new features in the future with free firmware updates.
<b>Advanced Graphic Display</b>	Improved high resolution display with 16 gray tones ensures easy-to-read text and icons. Automatic adjusted white backlight enables driving at night.
<b>MYLAPS X2 Link Ready</b>	Ready to connect directly to the X2 Link from MYLAPS. Get information about position in race, official lap time, gap to leader and to driver in front of you!
<b>Audio Voice Feedback</b>	Concentrate on driving and get voice feedback in a wired headset or a Bluetooth headset. Voice feedback is in your local language!
<b>Advanced Analysis Software</b>	Includes the highly appreciated Off Camber Data analysis software. Runs on both Windows PC and Mac.
<b>Improvements</b>	Better display contrast, scratch free window, thick overlay to protect display from helmet, new battery holder, GPS connector and SW adjustable RPM circuit.

# UniGo 7006



## 100Hz GPS Receiver

**QUALITY CABLE**  
Soft and flexible cable with quality M9 connector.

**LED**  
Green/red LED for status and other feedback.

**GPS RECEIVER**  
Tracks several satellite systems at the same time.

**IMU**  
Accelerometer, gyroscope, magnetometer makes 3D tracking possible.

**AIR CHANNEL**  
Air flow for temperature and humidity sensors.

\* Two inputs with optional cable splitter.

# UniGo 7006 Lite

## LIMITED FEATURES - LOWER PRICE

### Limitations of UniGo 7006 Lite

- No GPS receiver included.
- Max. 200 laps and 2 hours of logging.
- WiFi, CAN, Bluetooth, NFC disabled.
- Audio voice feedback disabled.
- One temperature input only.
- No Flex inputs.
- No humidity or air pressure.
- No internal temperature.
- Cannot be expanded with UniBox.



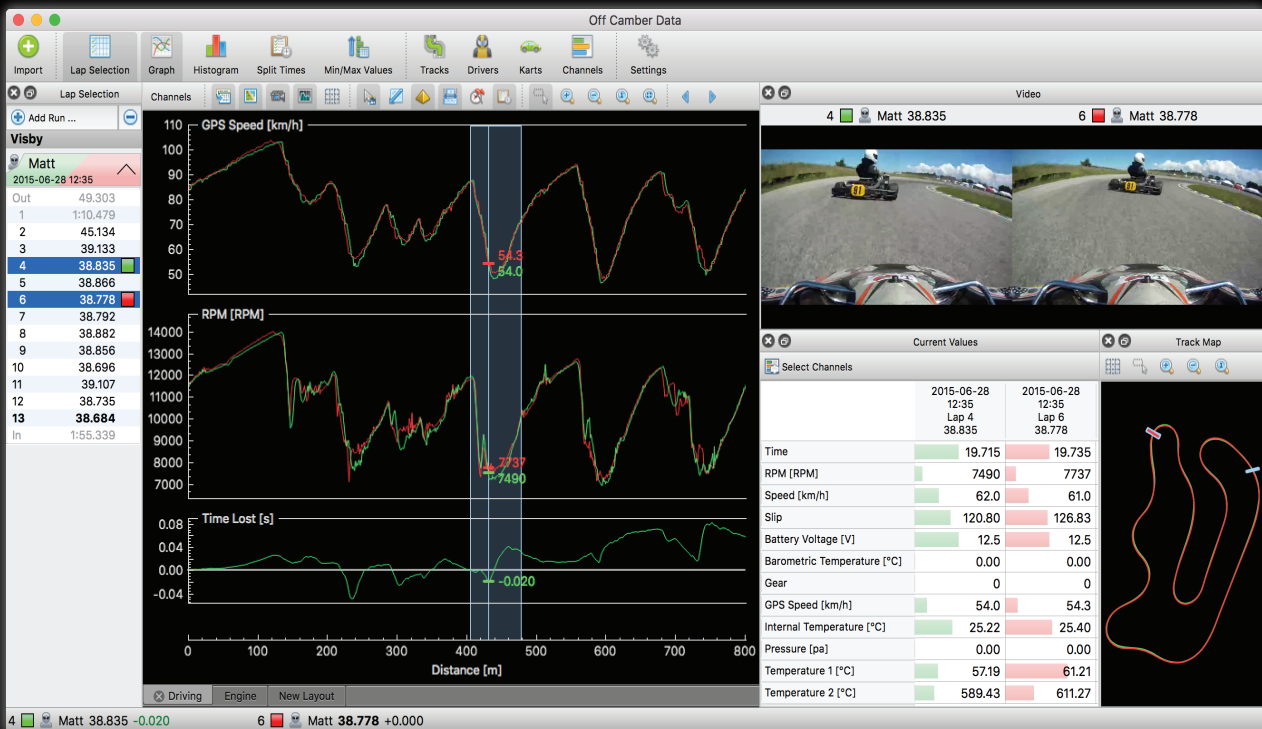
## Same Platform Upgrade when you need it

### Upgrade Packages

<b>GPS Receiver</b>	Adds GPS trigger, track map, 3D tracking, speed and more.
<b>Communication Package *</b>	Adds WiFi, Bluetooth, BLE and NFC.
<b>Temperature Package *</b>	Adds second temperature input and internal temperature.
<b>Expansion Package *</b>	Adds Flex input, expansion possible with UniBox and CAN for MYLAPS X2 Link.
<b>Feature Package *</b>	Adds audio voice, unlimited memory, air pressure and humidity (in GPS module).
<b>All Inclusive Package *</b>	Adds all features. Turns a UniGo 7006 Lite into a UniGo 7006.

\* Enabled by license code directly on Laptimer.

# Analysis Software



OFF CAMBER DATA - FOR PC AND MAC

## Included with UniGo 7006

The highly appreciated Off Camber Data analysis software is included at no extra cost. This software is built in cooperation with Unipro, and it is continuously updated with new features. Communicates with UniGo through USB or WiFi. And it is available for both Window PC and Mac.

- Import videos directly from your GoPro.
- Look at split times to get a first idea where to improve.
- Find out exactly where you lost time with the delta graph.
- Set up graph layouts for every area of interest.
- Use the histogram to take the guesswork out of optimizing your engines.
- Quickly see min/max speed, RPM, temperatures, and other values.
- Use the calculated slip graph to optimize braking technique.
- Fix missed magnet splits after the session.
- Download and synchronize track settings from the Internet.
- Configure one or more UniGo quickly from the computer.
- Export data to RaceRender, DashWare, Google Earth, or Excel.